



EL20 series Digital Level

Attractive designs, high quality with lower prices
Trigger key for one touch operation



EL20 digital level is designed with new code processing and auto-leveling technology. Its outstanding features make EL20 applied for the 3rd and 4th order leveling and construction measurement.

EL20 can replace tradition optical level with high quality but lower price. Easy one-touch operation with trigger key to get dH and HD displayed on screen almost instantly, you can enjoy survey work freely.

EL20 Series Digital Level



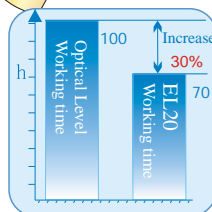
Technical data

	EL24	EL28
Accuracy		
Standard deviation of 1km double run(ISO 17123-2)		
Electronic measurement	±2.0mm*	±1.5mm*
Optical measurement	±2.0mm*	±1.5mm*
Distance measurement	D<10: <10m D>10m: ±0.2% × D	
Electronic measurement		
Time for single measurement	≤2s	
Range	2-80m	
Measurement modes	Single, tracking	
Display resolution(m/inch selectable)		
Height	1mm/0.01ft	
Distance	10mm/0.1ft	
Telescope		
Clear objective aperture	45mm	
Magnification	24×	28×
Field of view at 100m	2.6m	
Shortest focus distance	0.8m	
Automatic compensator		
Working range	15'	
Setting accuracy	±0.4"	
Power		
Battery	2000mAh Ni-MH rechargeable	
Continuous operation time	Approx. 40 hours	
Measurement programs		
On-board programs	DH, inverse staff measurement I error checking and adjustment	
Others		
Display	Segment display	
Keyboard	Function key board, 6keys	
Interface	RS-232C	
Sensitivity of circular level	8' /2mm	
Water and dust protection	IP54	
Operating Temp	-20°C~ +50°C	
Net Weight	2kg	

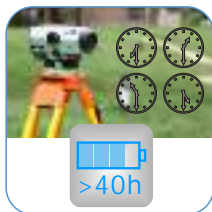
* Depending on staff and levelling technique.



Easy one-touch operation, simply push the trigger key



Quicker and easier than an optical level
Efficiency increased by 30%



The battery could work more than one week
Compact design



Quick height and distance result-
the reading is displayed almost instantly with measurement



Advance compensator checking button

Related Products



DS03



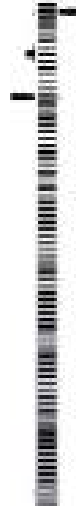
EL302A



B3120
Code tape



B2650(5m)
Code staff



B2620(2m)
B2630(3m)
Code staff

Illustrations, descriptions and technical specifications are not binding and may change

FOIF Since 1958
It's professional

Suzhou FOIF Co.,Ltd.

TEL:+86 512 65224904

FAX:+86 512 65230619

Http://www.foif.com

E-mail:internationalsales@foif.com.cn

ADD: 18 Tong Yuan Road, Suzhou 215006, P.R. China



Local Dealer: